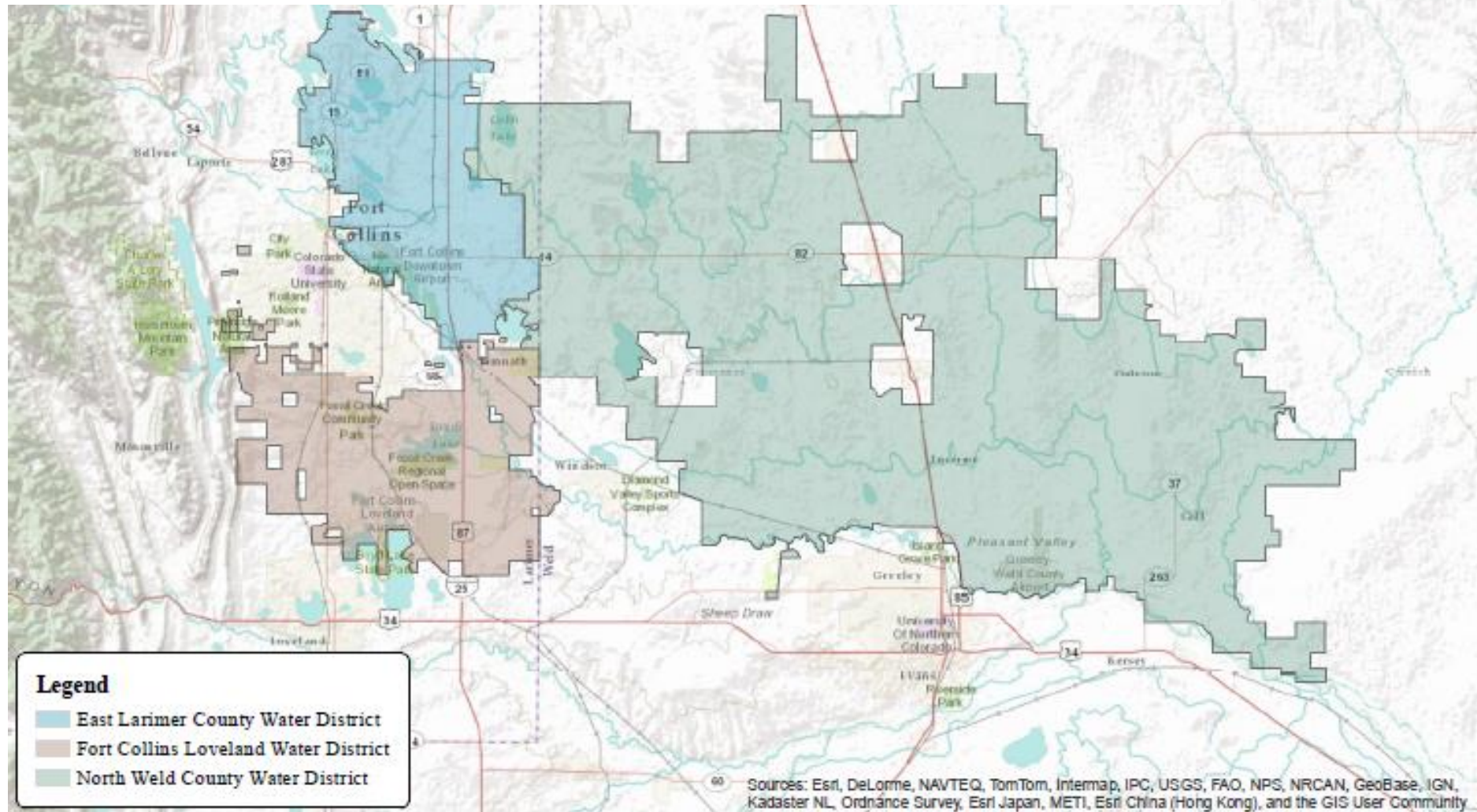


ELCO, Fort Collins-Loveland and North Weld



- Also serving 8 wholesale accounts (Ault, Pierce, Nunn, Eaton, Severance, Windsor, Northern Colorado Water Association, Sunset Water District)



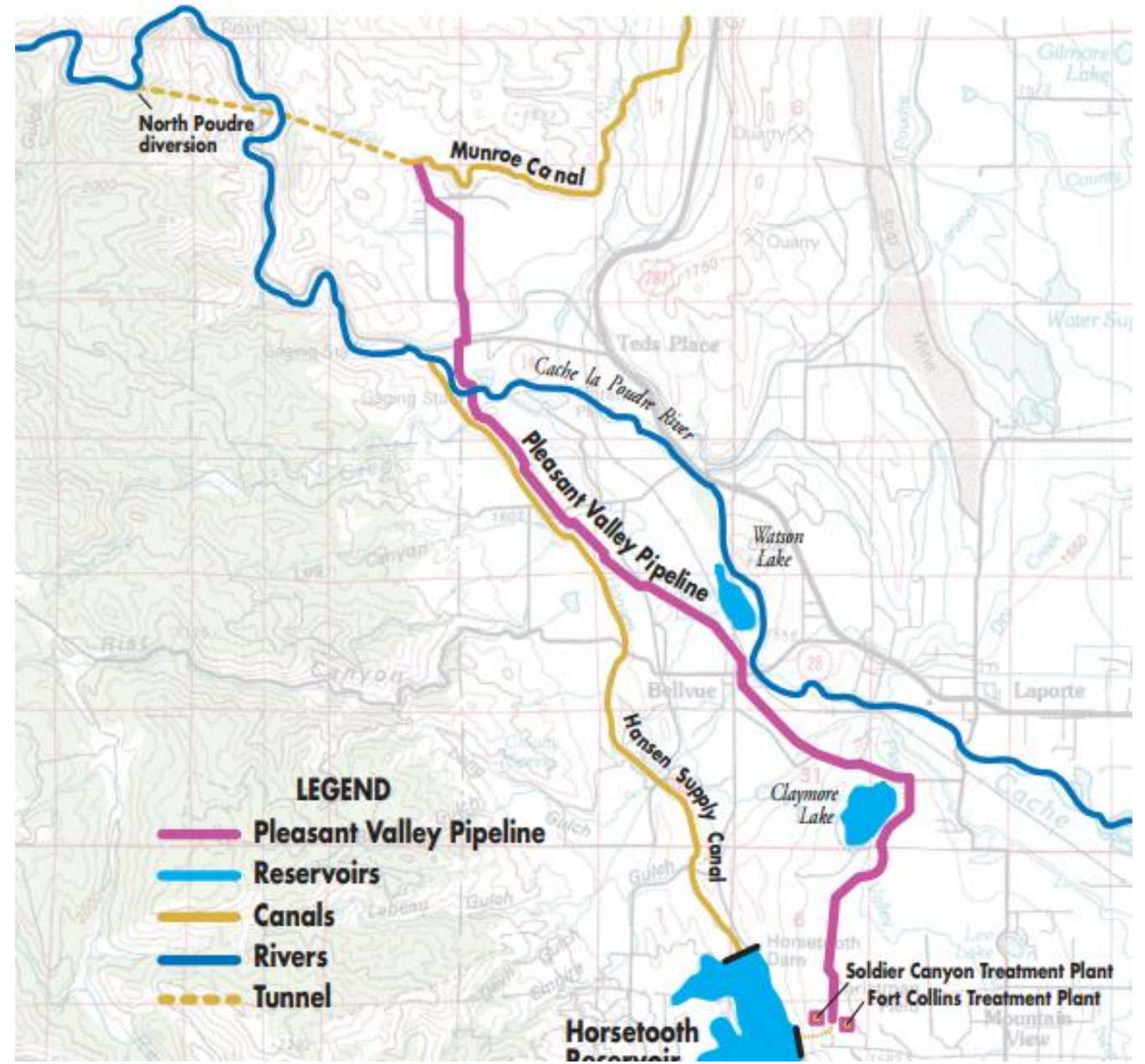
Soldier Canyon Filter Plant



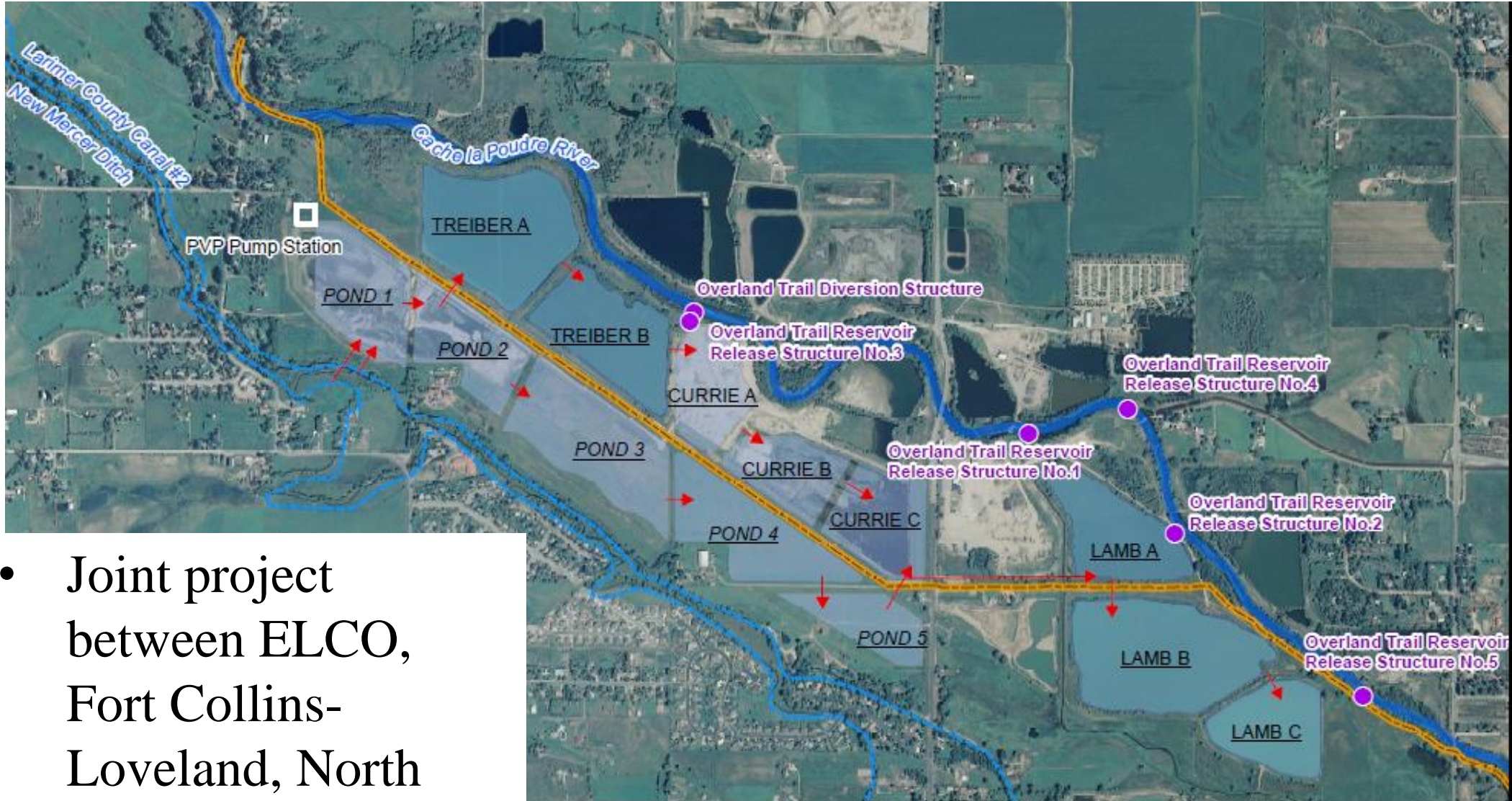
- Serves approximately 100,000 people

Pleasant Valley Pipeline

- Coordination between ELCO, Fort Collins-Loveland, North Weld, the City of Fort Collins, North Poudre Irrigation Company and Northern Water



Overland Ponds Gravel Pits



- Joint project between ELCO, Fort Collins-Loveland, North Weld and the City of Greeley

River Bluffs Gravel Pits

- Joint project between ELCO, North Weld and the New Cache Irrigation Company



ELCO Water Sources

- C-BT and North Poudre Irrigation Company
- Water Supply and Storage, Jackson Ditch, New Mercer Ditch, Arthur Irrigation Company, and Larimer County No. 2 Ditch.
- Poudre, Laramie and Colorado Basin water rights.

ELCO Meeting Future Challenges

- Tiered Water Rates
- Nonpotable Irrigation Systems
- Updating Aging Infrastructure
- Expansion of Soldier Canyon Filter Plant